

BATTERY BOXES

BW-BattBox17R (17"W x 8"H x 8"D) - Red

BW-BattBox17G (17"W x 8"H x 8"D) - Gray

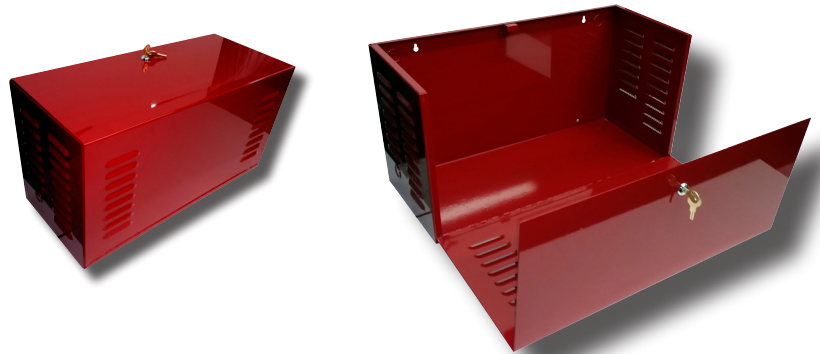
BW-BattBox17Y (17"W x 8"H x 8"D) - Yellow

BW-BattBox22R (22"W x 10"H x 10"D) - Red

BW-BattBox22G (22"W x 10"H x 10"D) - Gray

BW-BattBox22Y (22"W x 10"H x 10"D) - Yellow

- UL/c-UL 508A Listed - File E478235, 16 Gauge CRS
- Ventilated with E002 lock, CAT30 Lock optional
- Holds two 55AH batteries or four 30AH batteries



MORE ENCLOSURES FOR FIRE OR MAINTENANCE INSTALLATIONS

DOCBOXES

BW-DocBox (15"W x 13"H x 4"D)

- UL/c-UL 508A Listed - File E478235, 18 Gauge CRS
- Three labels: "Fire Alarm Documents", "As Built Permits", "Test and Maintenance Documents"
- Adjustable bungee to fit various sizes of binders, etc
- Door bracket holds two CDs, key sets and folders
- E002 cam lock with two keys, CAT30 optional

BW-DocBox2 (11"W x 15"H x 4"D)

Smaller model without the door bracket.

BW-DocBoxY (15"W x 13"H x 4"D)

- Label reads, "Equipment Safety Documents"
- Adjustable Bungee, Door Bracket, E002 Lock, CAT30 Optional



ELECTRICAL/JUNCTION BOXES

BW-97RUL - 5.25"W x 5.25"H x 2.0"D

BW-98RUL - 7"W x 8"H x 3.5"D

BW-106RUL - 12"W x 12"H x 4"D

BW-310RUL - 12"W x 12"H x 5.5"D

BW-99RUL - 11"W x 15"H x 4"D

BW-100RUL - 11"W x 15"H x 4"D with louvers

BW-101RUL - 15"W x 18"H x 4"D

BW-103RUL - 24"W x 30"H x 6"D with louvers

MORE models available!

- All are UL/c-UL 508A Listed - File E478235
- Mier E001, E002, E005 or CAT30 locks available for each
- Multiple conveniently located knockouts
- Also available with removable internal panels as shown (add BP to the end of the part number)
- Also available in Gray or Beige. Custom colors available for 25 or more.



SPARE PARTS ENCLOSURES

Models under development!

- All are UL/c-UL 508A Listed - File E478235
- Mier E001, E002, E005 or CAT30 locks available for each
- Multiple adjustable shelves

TRANSFORMER COVERS

BW-250RUL - 4.625"W x 5.75"H x 2.5"D

BW-375RUL - 4.625"W x 5.75"H x 3.75"D

New BW-260RUL - 4.625"W x 6.5"H x 3.75"D

New BW-261RUL - 4.625"W x 6.5"H x 4.25"D

- All are UL/c-UL 508A Listed - File E478235
- Also available in Gray or Yellow (add a G or a Y in place of the R in the part number)

