

Mounting Examples for Mier Products'

TEMPERATURE CONTROLLED ENCLOSURES



Mounted inside the gate-house at a gated community



Wall-mount

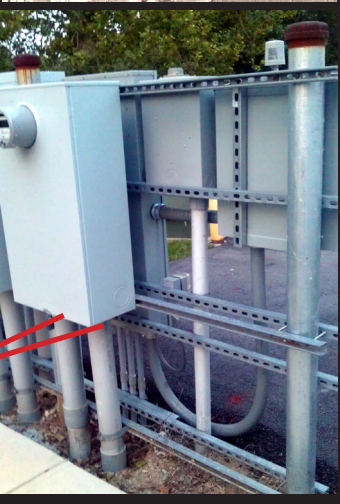


Using metal tubing or angle-iron and a concrete slab



Using conduit and angle-iron

Remember: sealing the *outside* of holes used for conduit coming up from the ground is only half of the job. You must also make the *inside* of the opening from the conduit water/air-tight to prevent ground condensation and even mice from coming up into the enclosure!



Along a gate using metal tubing to run wiring from one enclosure to another



Rack Enclosure mounted on a wall



Installer made mounting surface



Pole-Mount Kits available for our enclosures to be mounted on 4" to 14" poles. Call us and specify the enclosure you want to use, and the pole size, for help choosing the correct pole-mount kit.



NOTE: Do Not Mount On Apartment/Condo/Office Walls

Home and office AC units are mounted a few feet away from a home or on the roof of an office building in order to avoid vibration noise from becoming a nuisance to those who live/work within. For that same reason, Mier recommends installers mount our temperature-controlled enclosures on concrete slabs with angle-iron or poles as pictured, or on walls that are not common to living or office space.

Our engineers recommend the following options around **RGS fittings** in holes installers might cut into the enclosures, in order to keep NEMA ratings:

- If not using conduit or flex-cable, and running your cords directly into the enclosure, we recommend drilling your holes in the bottom of the enclosure and using a Heyco fitting appropriate for your specific cord size, and able to fit in our 3/16" enclosure wall thickness. These fittings can be found at: http://www.heyco.com/Liquid_Tight_Cordgrips/index.cfm
- If you are using conduit or flex-cable, we recommend drilling your holes in the bottom of the enclosure and using an appropriate fitting such as:
 - SealCon DS21AA-BK = 3/4" Liquid-Tight Conduit Fitting with DOUBLE Lock - <http://www.sealconusa.com/conduit/product/double-seal.html>
 - SealCon ST21NA-BK = 3/4" Liquid-Tight Conduit Fitting with SINGLE Lock - <http://www.sealconusa.com/conduit/product/condsttwist-npt.html>
 - McMaster Carr 7119K13 = 3/4" Liquid-Tight Conduit Fitting/Heavy-Duty - <http://www.mcmaster.com/#7119k13/=vg864m>