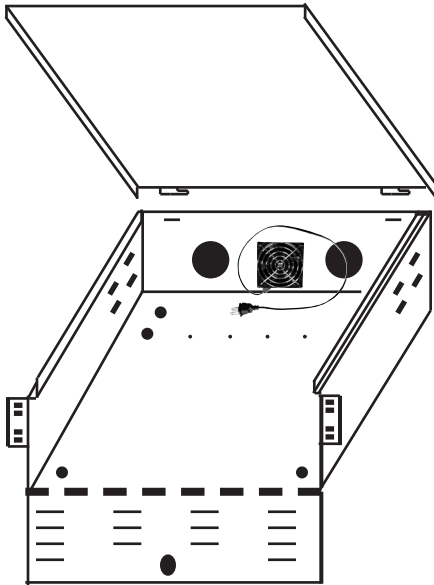


Parts List for Mier Product's Indoor, NEMA 1, Fan-Ventilated, Rack-Mountable DVR Lockboxes

Enclosure Parts List:



One (1) Removable
Top Panel

A

One (1) Chassis with
Drop-Down Door and
Front-Rack Brackets
attached

B

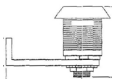
Two (2) Adjustable
Rear-Rack Brackets

C1 & C2



One (1) BW-E001 Cam Lock
Installed

D



Two (2) BW-E001 Cam
Lock Keys

E



One (1) Continuous-Duty Fan
with fan-guard installed

F

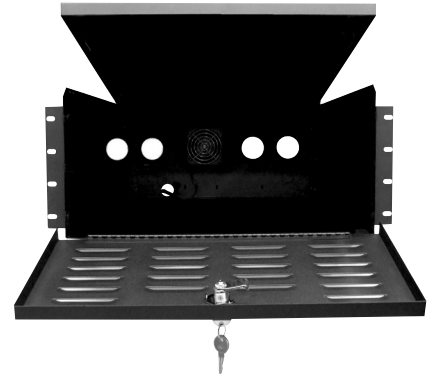


One (1) Fan-Cord Installed

G



BW-230



Outside Dimensions: 17.73W x 8.1H x 24D
Inside Dimensions: 17.65W x 8H x 23.9D
(21.9"D where fan protrudes into the back)

BW-235



Outside Dimensions: 17.73W x 5.1H x 24D
Inside Dimensions: 17.65W x 5H x 23.9D
(21.9"D where fan protrudes into the back)

Eight (8) 10-32 x 3/8" Black
Screws



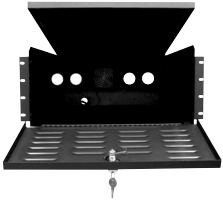
Eight (8) 1/4-20 x 3/8" Zinc-
Plated Screws



Eight (8) 1/4-20 Zinc-Plated
nuts



Assembly & Mounting Instructions for Mier Product's Indoor, NEMA 1, Fan-Ventilated, Rack-Mountable DVR Lockboxes



Step 1:

Unlock the Drop-Down Door on the Chassis (B), allow the front door to drop down. Lift up the Removable Top Panel (A) from the Chassis, and slide it gently backwards so the tabs un-hook from the chassis and allow you to lift the top panel off. Set the top panel aside.

Step 2:

If using a two-post rack, skip this step. If you want to attach the enclosure to a **four-post rack**: use eight (8) 1/4-20 x 3/8" screws (Part I), and eight (8) 1/4-20 nuts (Part J), to mount the Adjustable Rear Mounting Brackets (Parts C1 & C2) to the side of the Chassis (Part B). The slots in the Adjustable Rear Brackets, along with the corresponding sets of slots in the rear of the Chassis, allow you to adjust the Rear Bracket position for mounting to various styles of four-post racks.

Step 3:

Use four (4) 10-32 x 3/8" Black Screws (Part H) to mount through the front mounting ears on the Chassis (Part B) into the FRONT two posts of your rack. The Chassis (B) should now be mounted securely into your rack and ready for the installation of your DVR/NVR or other equipment.

Step 4:

If using a two-post rack, skip this step. If you are attaching the lockbox to a **four-post rack**, use four (4) 10-32 x 3/8" Black Screws (Part H) to mount through the Adjustable Rear Mounting Brackets (Parts C1 & C2) into the REAR two posts of your rack.

Step 5:

Install your equipment inside the Chassis (B), which is now mounted in your rack.

Step 6:

Re-install the Removable Top Panel (A) by sliding the tabs into the guide holes into the back of the Chassis (B), and then dropping the Top Panel (A) into place on top of the Chassis (B). Now, lift up the front Drop-Down Door over the opening of the Chassis and the Removable Top Panel and lock it. This will secure the entire unit, and your components mounted within.

