

# Installation Instructions

## Mier Products' Non-Metallic, Fan-Ventilated, NEMA 3R, Enclosures

**URGENT!**  
Handle with care during shipping, storage, and installation.

The Fans and Shrouds must be mounted to the enclosure using the pre-cut holes and supplied gaskets. The Fans must be installed in the proper position.

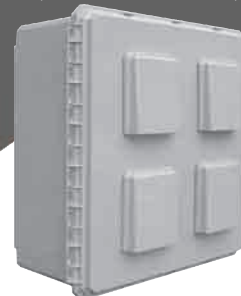
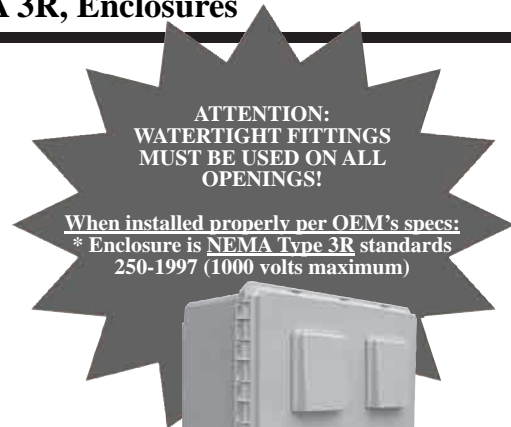
Follow all OEM instructions to maintain NEMA rating and proper performance.



**BW-FC16147**



**BW-FC181610**



**BW-FC242410**

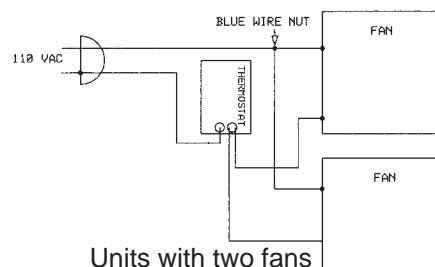
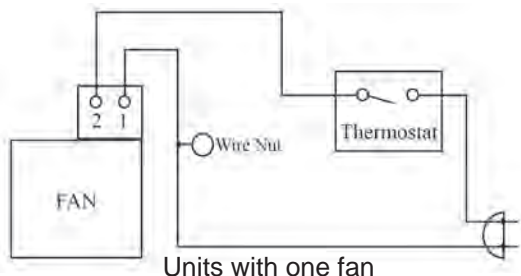
The **BW-FC16147** and **BW-FC181610** have one fan and two shrouds. The larger **BW-FC242410** has two fans and four shrouds.

1. Connect the Fan Cord to the Terminals on the Fan
2. Snap the Filter Retainer and the Filter off the Filter Bracket, and set them aside for later assembly
3. Assemble the Fan to the upper fan opening, putting the Fan on the INSIDE, and the Filter Bracket on the fan itself. Use four (4) #8x32x1<sup>3</sup>/<sub>4</sub> inch screws and nuts. FAN AIRFLOW SHOULD BE OUT OF THE ENCLOSURE.
4. Install the lower Filter Bracket(s) using four (4) #8x32x1<sup>3</sup>/<sub>4</sub> inch screws and nuts. Leave a little slack in the Fan Cord so it does not pull from the Fan Terminals.
5. Install the Rain Shrouds at the top and bottom openings with the Air-Entrance Holes at the bottom (i.e. facing down). Use the six (6) screws and flat washers supplied for each Rain Shroud.
6. Install Filters and Retainers by snapping onto the Filter Brackets
7. Fan may now be plugged into 115VAC for continuous duty
8. Openings in the bottom of the Rain Shrouds should be checked periodically for debris blocking air flow
9. Fan Filter(s) should be cleaned or replaced a minimum of every six months. Do so more often in dust/pollen/debris/ ridden areas.

### FAN THERMOSTAT CONTROL INSTALLATION



1. Cut the 115VAC Plug off the Fan Cord after mounting the Fan and Rain Shrouds
2. Set the Thermostat Control to about 70 to 75 degrees Fahrenheit for most installations. However, before determining the Thermostat setting for your specific application: you must consider the operating parameters of the equipment you are installing, specifically the operating temperatures, and you must take into consideration the temperature of the installation environment, seasonal changes, and the heat load of the electronics within. If the electronics are less than 100 Watts and the installation is in a normal indoor temperature controlled setting, it is recommended to set the Thermostat to 80 degrees Fahrenheit.
3. Wire the Thermostat in series with the Fan: one Fan Cord Wire to the Thermostat and the other Fan Cord Wire to a 115VAC Plug. Another Wire from the 115VAC Plug goes to the other Thermostat Terminal.
4. Mount the Thermostat to the MIDDLE RIGHT SIDE of the Enclosure using the Two-Sided-Tape supplied.



## Installation Instructions Mier Products' Non-Metallic, Fan-Ventilated, NEMA 3R, Enclosures



**NOTE:** These "FC" fan-cooled units simply exchange internal air for the external air. Therefore, **Fan-Cooled models are not recommended for high-temperature or low temperature environments.** Because these units pull external air into the enclosure through a filtering system, they do not meet the NEMA 4 standards of Mier's air-conditioned and heated models (ACE or ACHT). However, they are designed to NEMA 3R specifications. Therefore, **Fan-Cooled models are not recommended for applications where internal components need to be protected from wash down conditions. When using these models you must keep the filters clean and must not block the fan, air intake, or air-flow with items mounted inside the enclosure.** If your installation is in warmer or cooler exterior or interior temperatures than these, if your internal heat load is greater, or if you are installing in a coastal or highly corrosive area call Mier Products for advice on our other models. **Mier recommends only installing units with clear doors in shaded areas;** as interior temperatures of these units reach 20° higher than units without windows or clear doors.

See the Warranty & Return Policy shipped with this enclosure. Warranty protection and information for each component such as fans, filters, and thermostats are provided by their respective OEMs.

- This enclosure is properly installed when the top & bottom mounting ears are flush against the wall and held securely with appropriate bolts, and the hinges face to the left side after the enclosure has been mounted on the wall
- Watertight fittings must be used on all openings.
- The door-gasket around the opening of the enclosure must remain in place and never be removed or altered.
- The fans and shrouds must be mounted using the appropriate pre-cut holes on the enclosure, and strictly following OEM installation guidelines.
- **If you have ANY questions regarding the installation of these products, call Mier Products at 1-800-473-0213**

Your Fans have been placed in a carton and stored inside the enclosure for shipment to protect them. Please CAREFULLY remove them along with the Shrouds, Filters and Hardware and place them aside for installation. Please read the other side of this page for installation instructions. If you have any questions please call Mier Products at 1-800-473-0213 between 8am and 5pm EST.



1-800-473-0213 | [www.mierproducts.com](http://www.mierproducts.com)



Wireless Vehicle Detection | Driveway Alarms | Drive-Up Window Detection | Buried Sensor Systems | Instrument Boxes | DVR/CPU Lockboxes  
NEMA Enclosures | Outdoor Enclosures | Temperature Controlled Enclosures | UL/NEMA Non-Metal Enclosures | Rack Enclosures, Shelves,  
and Drawers | Siren/Speaker Cabinets | Bell Boxes | Structured-Wiring Flush-Mount Cabinets | Power Supply Boxes | Battery Cabinets  
Transformer Covers | Custom Fabrication, Powder Coat, and Screening